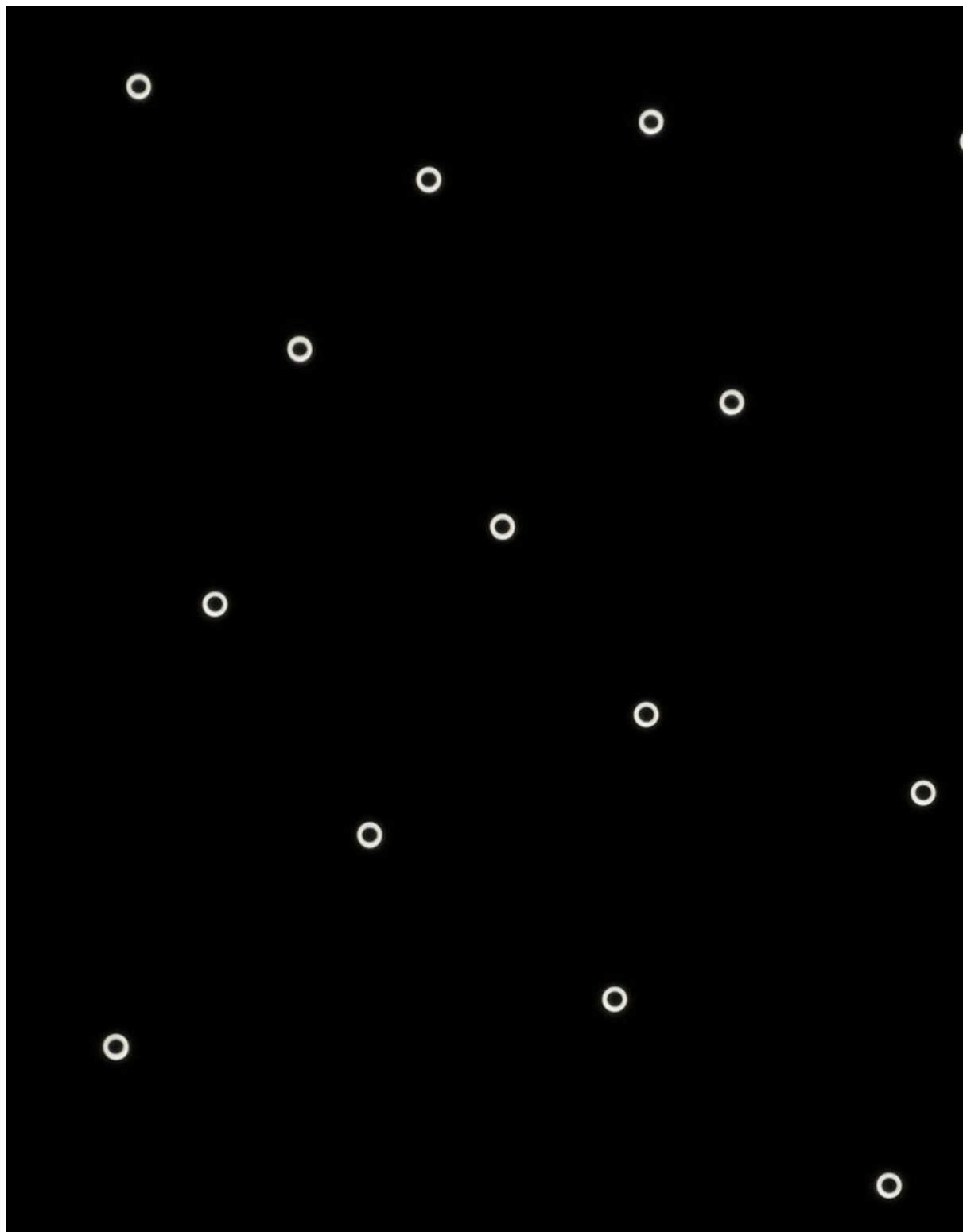


LL-RING_K

SEGNAPASSO LED DA INTERNO / ESTERNO

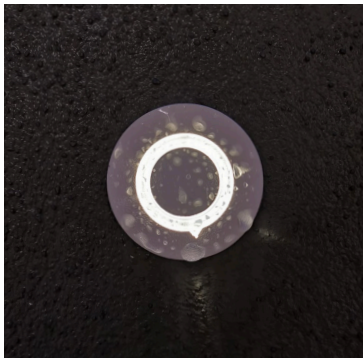
LED STEP LIGHT FOR INDOOR / OUTDOOR

1-2 W | IP67

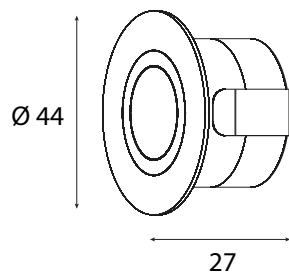


1-2 W | IP67

■ □ WHITE - BLACK ANODIZED



DIMENSIONI / DIMENSION

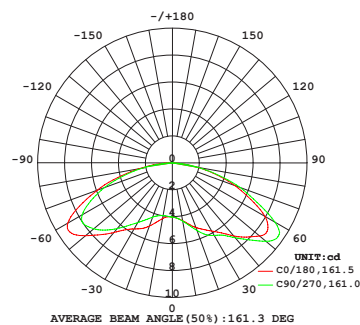


Prodotto: Segnapasso LED da incasso a pavimento / parete
 Potenza: 1-2 W
 Materiale: Corpo in alluminio tornito, cassaforma in plastica
 Sorgente luminosa: Chip LED
 Ottica: PMMA solido
 CCT: 3000K - 4000K
 CRI>80
 Flusso luminoso (WW-1W): 33 lm
 Angolo di emissione: 160°
 Bianco - Nero anodizzato (consigliato per installazione a terra)
 Grado di protezione IP: IP67
 Alimentatore: Esterno, da ordinare separatamente
 Input 1W: DC 2.8 – 3.2 V / 350 mA
 Input 2W: DC 2.8 – 3.2 V / 700 mA
 Classe di isolamento: Classe III
 Dimensioni: Ø 44 x 27 mm
 Dimensioni cassa tubolare:
 Terra: Ø 39.8 x H 74.5 mm
 Parete: Ø 39.8 x H 45 mm
 Foro installazione senza cassa: Ø 36 mm
 Certificazioni: CE - Conforme alla norma EN 60598-1 e relative note

Product: LED step light ground / wall recessed
Power: 1-2 W
Material: Turned aluminum body, plastic formwork
Light source: Chip LED
Optic: Solid PMMA
CCT: 3000K - 4000K
CRI>80
Luminous flux (WW-1W): 33 lm
Light beam angle: 160°
White - Black anodized (suggested for in-ground installation)
IP rating: IP67
Power supply: External, to be ordered separately
Input 1W: DC 2.8 – 3.2 V / 350 mA
Input 2W: DC 2.8 – 3.2 V / 700 mA
Insulation class: Class III
Dimension: Ø 44 x 27 mm
Tubular formwork dimension:
Ground: Ø 39.8 x H 74.5 mm
Wall: Ø 39.8 x H 45 mm
Cut out without formwork: Ø 36 mm
Certifications: CE - Compliant with EN 60598-1 and related notes



DATI FOTOMETRICI / PHOTOMETRIC DATA

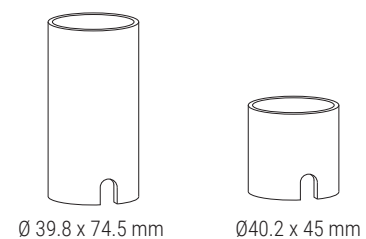


CODICE PRODOTTO
 PRODUCT CODE

LL-RING_K-X-X¹-X²

X POTENZA / POWER: 2
 X¹ FINITURA / FINISH: W - B
 X² CCT: WW - NW

CASSAFORMA
 INSTALLATION FORMWORK



Revision date: 08/2021